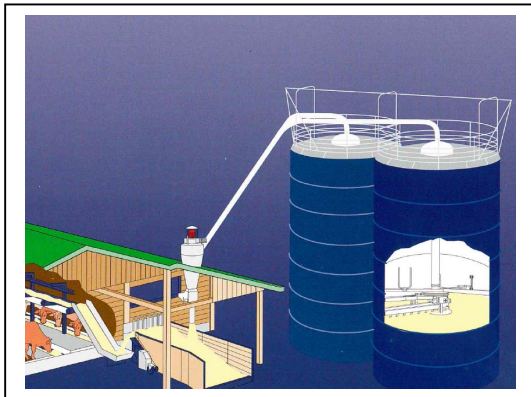
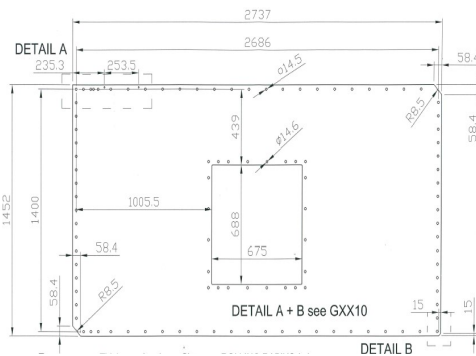


**Project:** Bolted Steel Silo System  
**Country:** Switzerland  
**Client:** GB Silo System AG, Niedergösgen  
**Description:** Structural Design for Silage Silo System  
**Year:** 2015



Ø	Blechstärken (mm) für Erdbebenzone Z1									
	0-2.8 m	2.8 - 5.6 m	5.6 - 8.4 m	8.4 - 11.2 m	11.2 - 14 m	14 - 16.8 m	16.8 - 19.6 m	19.6 - 22.4 m	22.4 - 25.2 m	25.2 - 28.00 m
4.27 m	2.5	2.5	2.5	3	3	4	4	5		
5.12 m	2.5	2.5	2.5	3	4	4	5	5	6	
5.97 m	2.5	2.5	3	3	4	4	5	5	6	7
6.83 m	2.5	2.5	3	4	4	4	5	6	6	7
7.68 m	2.5	2.5	3	4	4	5	5	6	7	8
8.54 m	2.5	2.5	4	4	4	5	6	6	7	8

eine Schraubreihe  
 zwei Schraubreihen